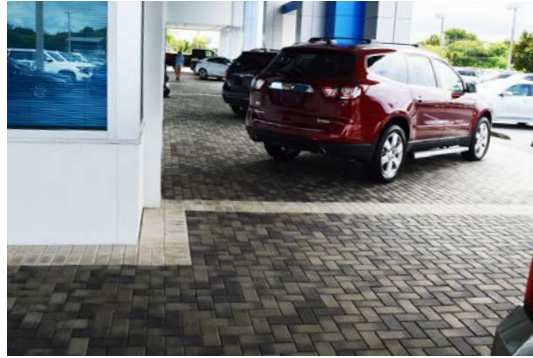
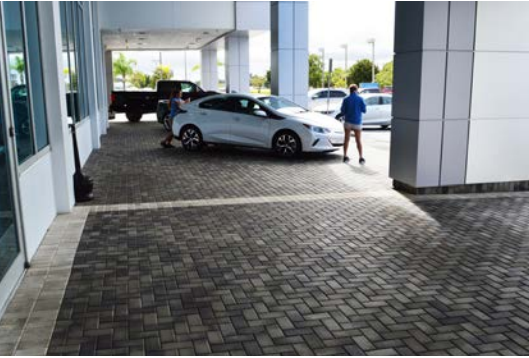
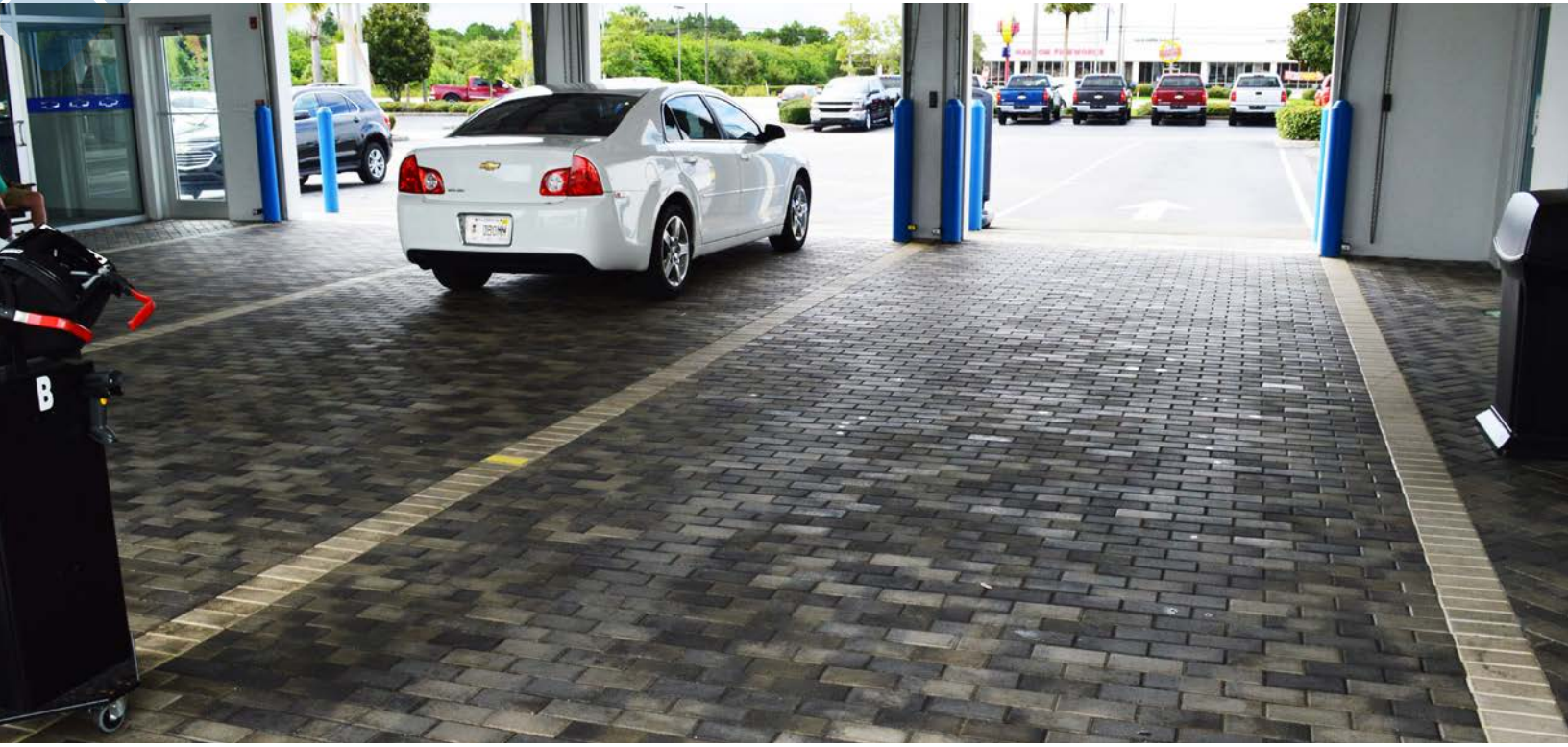




# COMMERCIAL APPLICATIONS

# DRiBOND

*A revolutionary polymer modified dry mudset.*







# COMMERCIAL APPLICATIONS

# DRIBOND

A revolutionary polymer modified dry mudset.

*A revolutionary polymer modified dry mudset.*

- Specifically Developed for Commercial Applications
- Cost Efficient
- No Concrete Removal/Demo
- Quick & Easy Application
- Minimal Preparation Time
- Environmentally Friendly
- Prevents Paver Settling\*
- No Long Term Repairs
- Inhibits Mold/Grass/Weeds
- Reduces Installation Time, Resulting in Greater Profits



## ***Installs like Sand, Sets like Cement™***

DriBond is an incredibly strong and durable bonding agent, perfect for commercial applications such as car dealerships, hotel pool decks and walkways, government installations and high-traffic businesses.

The management team at Bob Steele Chevrolet was seeking a solution to update and enhance their expansive car dealership parking lots, driveways and service bays. Rather than demolish thousands of square feet of existing concrete and shut down business for weeks, they installed thin pavers directly over their existing concrete surfaces using DriBond and dramatically improved the property's overall appearance. This was done in a fraction of the time and for far less cost than a conventional paver installation.

Please contact us for to see how DriBond can improve your business or commercial property.

Updated technical data sheet and MSDS can be found on our website at [www.pavertech.com](http://www.pavertech.com).

PATENT PENDING  
\*based on sound substrate and proper installation

## Specifications:

- Bag Weight:** 50lbs/ 22.7 kg
- Bag Coverage Rate:** Approx. 30 sq. feet (at depth of 3/8")
- ASTM C579, Compressive Strength:** 6,850 psi
- ASTM C666, Freeze Thaw Ratio:** 94%
- ASTM C308, Final Set-Time:** 5:40
- Maximum Depth:** 1"
- Maximum Variance:** 5/8"

**\* Wait 24hrs for foot traffic and 48hrs for vehicular traffic.**



- p:** 888.767.4777
- e:** [info@pavertech.com](mailto:info@pavertech.com)
- w:** [www.pavertech.com](http://www.pavertech.com)
- a:** 4366 U.S. Highway 1  
Vero Beach, FL 32967