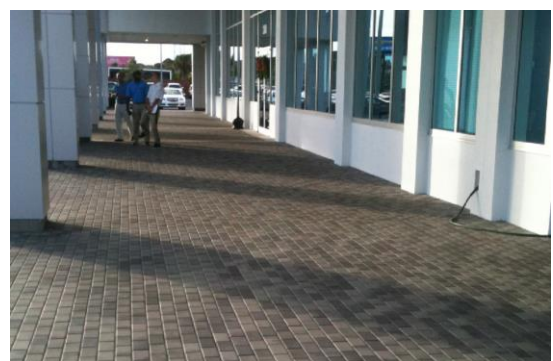
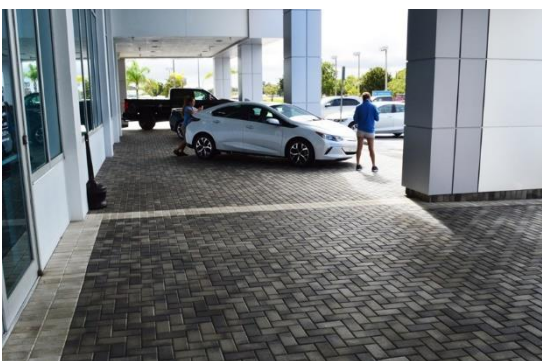




COMMERCIAL APPLICATIONS

DRiBOND®

DRiBOND Concrete Overlay Solutions, LLC



COMMERCIAL APPLICATIONS

DRiBOND®

DRiBOND Concrete Overlay Solutions, LLC

A revolutionary polymer modified dry mudset.

- Specifically Developed for Commercial Applications
- Cost Efficient
- No Concrete Removal/Demo
- Quick & Easy Application
- Minimal Preparation Time
- Environmentally Friendly
- Prevents Paver Settling*
- No Long Term Repairs
- Inhibits Mold/Grass/Weeds
- Reduces Installation Time, Resulting in Greater Profits

Installs like Sand, Sets like Cement™

DRiBOND® is an incredibly strong and durable bonding agent, perfect for commercial applications such as car dealerships, hotel pool decks and walkways, government installations and high-traffic businesses.

Our product can update and enhance parking lots, driveways and service bays. Rather than demolish thousands of square feet of existing concrete and shut down business for weeks, installing thin pavers directly over existing concrete surfaces using **DRiBOND®** can dramatically improve the property's overall appearance. This was done in a fraction of the time and for far less cost than a conventional paver installation.

Please contact us to see how **DRiBOND®** can improve your business or commercial property.

Updated technical data sheet and MSDS can be found on our website at www.dribondsolutions.com.

PATENTS: 9,790,650, 9,885,157, 10,294,159, 10,550,039, 11,001,526
*Based on sound substrate and proper installation

Specifications:

Bag Weight: 50lbs/ 22.7 kg
Bag Coverage Rate: Approx. 30 sq. feet (at depth of 3/8")
ASTM C579, Compressive Strength: 6,850 psi
ASTM C666, Freeze Thaw Ratio: 94%
ASTM C308, Final Set-Time: 5:40
Maximum Depth: 1"
Maximum Variance: 5/8"

** Wait 24hrs for foot traffic and 48hrs for vehicular traffic.*

DRiBOND®
A revolutionary polymer modified dry mudset.

Point of contact: Rick Long

o: (888) 717-4010
c: (616) 813-7533
d: (313) 752-3414
e: info@dribondsolutions.com
w: www.dribondsolutions.com
a: 1380 E. Jefferson Avenue
Detroit, MI 48207