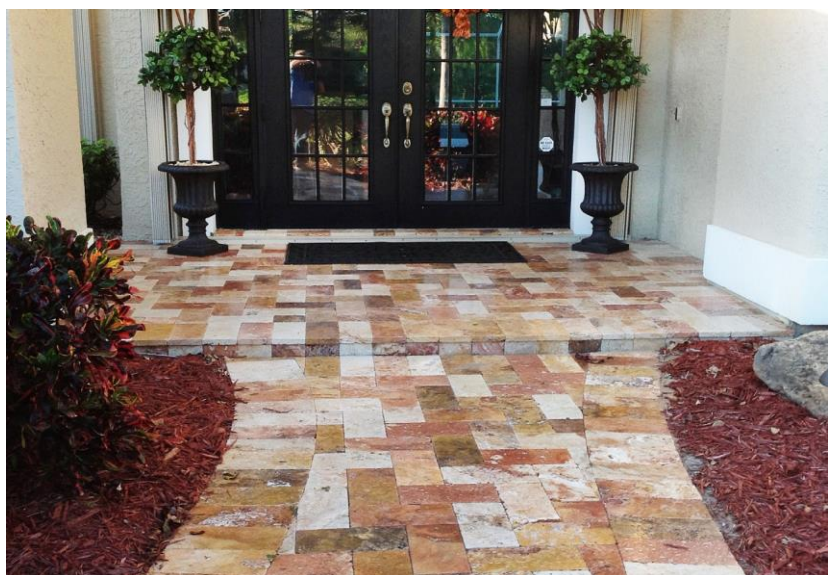
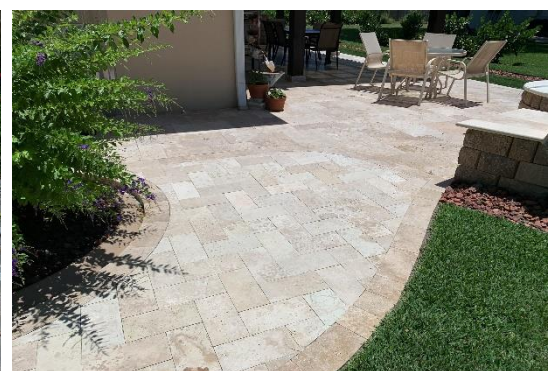
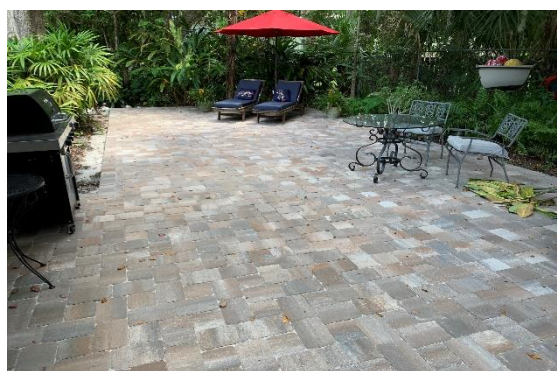




# SIDEWALKS & WALKWAYS

# DRiBOND®

DRiBOND Concrete Overlay Solutions, LLC





# SIDEWALKS & WALKWAYS

# DRiBOND®

DRiBOND Concrete Overlay Solutions, LLC

*A revolutionary polymer  
modified dry mudset.*

- Specifically Developed for Sidewalks & Walkways
- Cost Efficient
- No Concrete Removal/Demo
- Quick & Easy Application
- Minimal Preparation Time
- Environmentally Friendly
- Prevents Paver Settling\*
- No Long Term Repairs
- Inhibits Mold/Grass/Weeds
- Reduces Installation Time, Resulting in Greater Profits



**Installs like Sand, Sets like Cement™**

***Transform existing concrete walkways and commercial sidewalks into beautiful landscape masterpieces...!***

With **DRiBOND®** and thin pavers, boring concrete walkways can be transformed into stunning architectural showpieces, an ideal solution for entryway sidewalks, garden paths and commercial walkways.

**DRiBOND®** makes it easy to recondition existing concrete walkways and commercial sidewalks into beautiful hardscapes. Pavers and natural stone are an ideal solution for entryway sidewalks, garden paths and most walkways around your property.

Our overlay process allows you to install specific areas of your home and eventually the ability to cover and match all other areas (driveway, patios)

Updated technical data sheet and MSDS can be found on our website at [www.DRiBONDsolutions.com](http://www.DRiBONDsolutions.com).

Patent #'s for DRiBOND®: 9,790,650 | 9,885,157 | 10,294,159 - Patent #'s for Brick Paver Design: D829932 | D829931

\*Based on sound substrate and proper installation

## Specifications:

**Bag Weight:** 50lbs/ 22.7 kg

**Bag Coverage Rate:** Approx. 30 sq. feet (at depth of 3/8")

**ASTM C579, Compressive Strength:** 6,850 psi

**ASTM C666, Freeze Thaw Ratio:** 94%

**ASTM C308, Final Set-Time:** 5:40

**Maximum Depth:** 1"

**Maximum Variance:** 5/8"

***\* Wait 24hrs for foot traffic and 48hrs for vehicular traffic.***



**Point of contact: Rick Long**

- o: (888) 717-4010
- c: (616) 813-7533
- d: (313) 752-3414
- e: [info@dribondsolutions.com](mailto:info@dribondsolutions.com)
- w: [www.dribondsolutions.com](http://www.dribondsolutions.com)
- a: 1380 E. Jefferson Avenue  
Detroit, MI 48207